



Flexeril/Amrix (Cyclobenzaprine) Clinical Edit Criteria

Drug/Drug Class:

Flexeril/Amrix (Cyclobenzaprine)

Superior HealthPlan follows the guidance of the Texas Vendor Drug Program (VDP) for all clinical edit criteria. Superior has adjusted the clinical criteria to ease the prior authorization process regarding this clinical edit. The hyperthyroidism, cardiac condition and heart failure lookback period was shortened from 730 to 365 days. Syncope diagnosis as a basis for denial was removed. Using yellow borders and highlights, Superior has marked the ease in the edit step within the clinical edit criteria diagram and in the diagnosis code tables.

The original clinical edit can be referenced at the Texas Vendor Drug Program website located at <https://www.txvendordrug.com/formulary/prior-authorization/mco-clinical-pa>.

Clinical Edit Information Included in this Document:

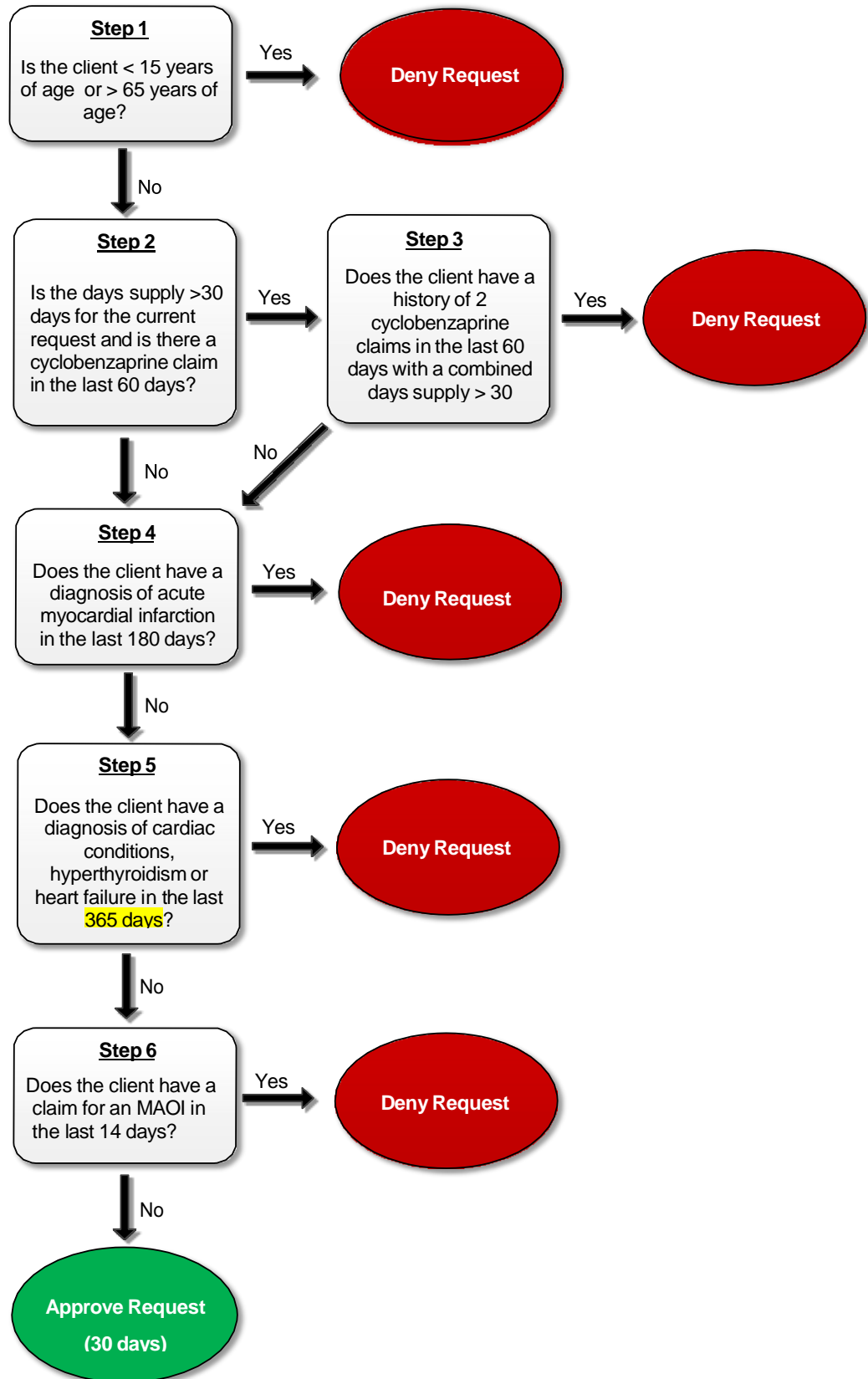
- **Drugs included in the edit:** a list of medications included in this clinical edit logic.
- **Logic diagram:** a visual depiction of the clinical edit criteria logic.
- **Diagnosis codes or drugs in step logic:** a list of diagnosis codes or drug information and additional step logic, claims and lookback period information.
- **Clinical Edit References:** clinical edit references as provided by the Texas Vendor Drug Program.
- **Publication history:** to track when the eased criteria was put into production and any updates since this time.

Please note: All tables are provided by original Texas Vendor Drug Program Flexeril/Amrix (Cyclobenzaprine) Edit. Eased criteria outlined or highlighted in yellow.

Drugs Requiring Prior Authorization:

Drugs Requiring Prior Authorization	
Label Name	GCN
AMRIX ER 15 MG CAPSULE	97959
AMRIX ER 30 MG CAPSULE	97960
CYCLOBENZAPRINE 10 MG TABLET	18020
CYCLOBENZAPRINE 5 MG TABLET	12805
CYCLOBENZAPRINE 7.5 MG TABLET	98299
FEXMID 7.5 MG TABLET	98299

Superior HealthPlan Clinical Edit Logic Diagram- Flexeril/Amrix (Cyclobenzaprine):



Diagnosis Codes and Drugs Used in Flexeril/Amrix (Cyclobenzaprine) Step Logic:

Step 2 (days supply greater than 30 days for the current request and a cyclobenzaprine claim) Required quantity: 1 plus incoming request Look back timeframe: 60 days	
Label Name	GCN
AMRIX ER 15 MG CAPSULE	97959
AMRIX ER 30 MG CAPSULE	97960
CYCLOBENZAPRINE 10 MG TABLET	18020
CYCLOBENZAPRINE 5 MG TABLET	12805
CYCLOBENZAPRINE 7.5 MG TABLET	98299
FEXMID 7.5 MG TABLET	98299

Step 3 (two cyclobenzaprine claims with a combined days supply of more than 30 days) Required quantity: 2 Look back timeframe: 60 days	
Label Name	GCN
AMRIX ER 15 MG CAPSULE	97959
AMRIX ER 30 MG CAPSULE	97960
CYCLOBENZAPRINE 5 MG TABLET	12805
CYCLOBENZAPRINE 10 MG TABLET	18020
CYCLOBENZAPRINE 7.5 MG TABLET	98299
FEXMID 7.5 MG TABLET	98299

Step 4 (diagnosis of acute myocardial infarction) Required diagnosis: 1 Look back timeframe: 180 days	
ICD-10 Code	Description
I2101	ST ELEVATION (STEMI) MYOCARDIAL INFARCTION INVOLVING LEFT MAIN CORONARY ARTERY
I2102	ST ELEVATION (STEMI) MYOCARDIAL INFARCTION INVOLVING LEFT ANTERIOR DESCENDING CORONARY ARTERY
I2109	ST ELEVATION (STEMI) MYOCARDIAL INFARCTION INVOLVING OTHER CORONARY ARTERY OF ANTERIOR WALL

Step 4 (diagnosis of acute myocardial infarction)**Required diagnosis: 1****Look back timeframe: 180 days**

ICD-10 Code	Description
I2111	ST ELEVATION (STEMI) MYOCARDIAL INFARCTION INVOLVING RIGHT CORONARY ARTERY
I2119	ST ELEVATION (STEMI) MYOCARDIAL INFARCTION INVOLVING OTHER CORONARY ARTERY OF INFERIOR WALL
I2121	ST ELEVATION (STEMI) MYOCARDIAL INFARCTION INVOLVING LEFT CIRCUMFLEX CORONARY ARTERY
I2129	ST ELEVATION (STEMI) MYOCARDIAL INFARCTION INVOLVING OTHER SITES
I213	ST ELEVATION (STEMI) MYOCARDIAL INFARCTION OF UNSPECIFIED SITE
I214	NON-ST ELEVATION (NSTEMI) MYOCARDIAL INFARCTION
I220	SUBSEQUENT ST ELEVATION (STEMI) MYOCARDIAL INFARCTION OF ANTERIOR WALL
I221	SUBSEQUENT ST ELEVATION (STEMI) MYOCARDIAL INFARCTION OF INFERIOR WALL
I222	SUBSEQUENT NON-ST ELEVATION (NSTEMI) MYOCARDIAL INFARCTION
I228	SUBSEQUENT ST ELEVATION (STEMI) MYOCARDIAL INFARCTION OF OTHER SITES
I229	SUBSEQUENT ST ELEVATION (STEMI) MYOCARDIAL INFARCTION OF UNSPECIFIED SITE

Step 5 (diagnosis of cardiac condition defect, hyperthyroidism, or heart failure)**Required diagnosis: 1****Look back timeframe: 365 days**

ICD-9 Code	Description
242	THYROTOXICOSIS WITH OR WITHOUT GOITER
2420	TOXIC DIFFUSE GOITER
24200	TOX DIF GOITER NO CRISIS
24201	TOX DIF GOITER W CRISIS
2421	TOXIC UNINODULAR GOITER
24210	TOX UNINOD GOIT NO CRIS
24211	TOX UNINOD GOIT W CRISIS
2422	TOXIC MULTINODULAR GOITER
24220	TOX MULTNOD GOIT NO CRIS
24221	TOX MULTNOD GOIT W CRIS
2423	TOXIC NODULAR GOITER UNSPECIFIED TYPE
24230	TOX NOD GOITER NO CRISIS
24231	TOX NOD GOITER W CRISIS

Step 5 (diagnosis of cardiac condition defect, hyperthyroidism, or heart failure)**Required diagnosis: 1****Look back timeframe: 365 days**

2424	THYROTOXICOSIS FROM ECTOPIC THYROID NODULE
24240	THYROTOX-ECT NOD NO CRIS
24241	THYROTOX-ECT NOD W CRIS
2428	THYROTOXICOSIS OF OTHER SPECIFIED ORIGIN
24280	THYRTOX ORIG NEC NO CRIS
24281	THYROTOX ORIG NEC W CRIS
2429	THYROTOXICOSIS WITHOUT MENTION OF GOITER OR OTHER CAUSE
24290	THYROTOX NOS NO CRISIS
24291	THYROTOX NOS W CRISIS
426	CONDUCTION DISORDERS
4260	ATRIOVENT BLOCK COMPLETE
4261	ATRIOVENTRICULAR BLOCK OTHER AND UNSPECIFIED
42610	ATRIOVENT BLOCK NOS
42611	ATRIOVENT BLOCK-1ST DEGR
42612	ATRIOVEN BLOCK-MOBITZ II
42613	AV BLOCK-2ND DEGREE NEC
4262	LEFT BB HEMIBLOCK
4263	LEFT BB BLOCK NEC
4264	RT BUNDLE BRANCH BLOCK
4265	BUNDLE BRANCH BLOCK OTHER AND UNSPECIFIED
42650	BUNDLE BRANCH BLOCK NOS
42651	RT BBB/LFT POST FASC BLK
42652	RT BBB/LFT ANT FASC BLK
42653	BILAT BB BLOCK NEC
42654	TRIFASCICULAR BLOCK
4266	OTHER HEART BLOCK
4267	ANOMALOUS AV EXCITATION
4268	OTHER SPECIFIED CONDUCTION DISORDERS
42681	LOWN-GANONG-LEVINE SYND
42682	LONG QT SYNDROME
42689	CONDUCTION DISORDER NEC
4269	CONDUCTION DISORDER NOS
427	CARDIAC DYSRHYTHMIAS
4270	PAROX ATRIAL TACHYCARDIA
4271	PAROX VENTRIC TACHYCARD
4272	PAROX TACHYCARDIA NOS

Step 5 (diagnosis of cardiac condition defect, hyperthyroidism, or heart failure)**Required diagnosis: 1****Look back timeframe: 365 days**

4273	ATRIAL FIBRILLATION AND FLUTTER
42731	ATRIAL FIBRILLATION
42732	ATRIAL FLUTTER
4274	VENTRICULAR FIBRILLATION AND FLUTTER
42741	VENTRICULAR FIBRILLATION
42742	VENTRICULAR FLUTTER
4275	CARDIAC ARREST
4276	PREMATURE BEATS
42760	PREMATURE BEATS NOS
42761	ATRIAL PREMATURE BEATS
42769	PREMATURE BEATS NEC
4278	OTHER SPECIFIED CARDIAC DYSRHYTHMIAS
42781	SINOATRIAL NODE DYSFUNCT
42789	CARDIAC DYSRHYTHMIAS NEC
4279	CARDIAC DYSRHYTHMIA NOS
428	HEART FAILURE
4280	CONGESTIVE HEART FAILURE, UNSPECIFIED
4281	LEFT HEART FAILURE
4282	SYSTOLIC HEART FAILURE
42820	UNSPECIFIED SYSTOLIC HEART FAILURE
42821	ACUTE SYSTOLIC HEART FAILURE
42822	CHRONIC SYSTOLIC HEART FAILURE
42823	ACUTE ON CHRONIC SYSTOLIC HEART FAILURE
4283	DIASTOLIC HEART FAILURE
42830	UNSPECIFIED DIASTOLIC HEART FAILURE
42831	ACUTE DIASTOLIC HEART FAILURE
42832	CHRONIC DIASTOLIC HEART FAILURE
42833	ACUTE ON CHRONIC DIASTOLIC HEART FAILURE
4284	COMBINED SYSTOLIC AND DIASTOLIC HEART FAILURE
42840	UNSPECIFIED COMBINED SYSTOLIC AND DIASTOLIC HEART FAILURE
42841	ACUTE COMBINED SYSTOLIC AND DIASTOLIC HEART FAILURE
42842	CHRONIC COMBINED SYSTOLIC AND DIASTOLIC HEART FAILURE
42843	ACUTE ON CHRONIC COMBINED SYSTOLIC AND DIASTOLIC HEART FAILURE
4289	HEART FAILURE NOS

Step 5 (diagnosis of cardiac condition defect, hyperthyroidism, or heart failure)

Required diagnosis: 1

Look back timeframe: 365 days

7943	NONSPECIFIC ABNORMAL RESULTS OF FUNCTION STUDY OF CARDIOVASCULAR SYSTEM
79430	ABN CARDIOVASC STUDY NOS
79431	ABNORMELECTROCARDIOGRAM
9971	SURG COMPL-HEART
ICD-10 Code	Description
E0500	THYROTOXICOSIS WITH DIFFUSE GOITER WITHOUT THYROTOXIC CRISIS OR STORM
E0501	THYROTOXICOSIS WITH DIFFUSE GOITER WITH THYROTOXIC CRISIS OR STORM
E0510	THYROTOXICOSIS WITH TOXIC SINGLE THYROID NODULE WITHOUT THYROTOXIC CRISIS OR STORM
E0511	THYROTOXICOSIS WITH TOXIC SINGLE THYROID NODULE WITH THYROTOXIC CRISIS OR STORM
E0520	THYROTOXICOSIS WITH TOXIC MULTINODULAR GOITER WITHOUT THYROTOXIC CRISIS OR STORM
E0521	THYROTOXICOSIS WITH TOXIC MULTINODULAR GOITER WITH THYROTOXIC CRISIS OR STORM
E0530	THYROTOXICOSIS FROM ECTOPIC THYROID TISSUE WITHOUT THYROTOXIC CRISIS OR STORM
E0531	THYROTOXICOSIS FROM ECTOPIC THYROID TISSUE WITH THYROTOXIC CRISIS OR STORM
E0540	THYROTOXICOSIS FACTITIA WITHOUT THYROTOXIC CRISIS OR STORM
E0541	THYROTOXICOSIS FACTITIA WITH THYROTOXIC CRISIS OR STORM
E0580	OTHER THYROTOXICOSIS WITHOUT THYROTOXIC CRISIS OR STORM
E0581	OTHER THYROTOXICOSIS WITH THYROTOXIC CRISIS OR STORM
E0590	THYROTOXICOSIS, UNSPECIFIED WITHOUT THYROTOXIC CRISIS OR STORM
E0591	THYROTOXICOSIS, UNSPECIFIED WITH THYROTOXIC CRISIS OR STORM
I440	ATRIOVENTRICULAR BLOCK, FIRST DEGREE
I441	ATRIOVENTRICULAR BLOCK, SECOND DEGREE
I442	ATRIOVENTRICULAR BLOCK, COMPLETE
I4430	UNSPECIFIED ATRIOVENTRICULAR BLOCK
I4439	OTHER ATRIOVENTRICULAR BLOCK
I444	LEFT ANTERIOR FASCICULAR BLOCK
I445	LEFT POSTERIOR FASCICULAR BLOCK
I4460	UNSPECIFIED FASCICULAR BLOCK
I4469	OTHER FASCICULAR BLOCK
I447	LEFT BUNDLE-BRANCH BLOCK, UNSPECIFIED
I450	RIGHT FASCICULAR BLOCK

Step 5 (diagnosis of cardiac condition defect, hyperthyroidism, or heart failure)**Required diagnosis: 1****Look back timeframe: 365 days**

I4510	UNSPECIFIED RIGHT BUNDLE-BRANCH BLOCK
I4519	OTHER RIGHT BUNDLE-BRANCH BLOCK
I452	BIFASCICULAR BLOCK
I453	TRIFASCICULAR BLOCK
I454	NONSPECIFIC INTRAVENTRICULAR BLOCK
I455	OTHER SPECIFIED HEART BLOCK
I456	PRE-EXCITATION SYNDROME
I4581	LONG QT SYNDROME
I4589	OTHER SPECIFIED CONDUCTION DISORDERS
I459	CONDUCTION DISORDER, UNSPECIFIED
I462	CARDIAC ARREST DUE TO UNDERLYING CARDIAC CONDITION
I468	CARDIAC ARREST DUE TO OTHER UNDERLYING CONDITION
I469	CARDIAC ARREST, CAUSE UNSPECIFIED
I470	RE-ENTRY VENTRICULAR ARRHYTHMIA
I471	SUPRAVENTRICULAR TACHYCARDIA
I472	VENTRICULAR TACHYCARDIA
I479	PAROXYSMAL TACHYCARDIA, UNSPECIFIED
I480	PAROXYSMAL ATRIAL FIBRILLATION
I481	PERSISTENT ATRIAL FIBRILLATION
I482	CHRONIC ATRIAL FIBRILLATION
I483	TYPICAL ATRIAL FLUTTER
I484	ATYPICAL ATRIAL FLUTTER
I4891	UNSPECIFIED ATRIAL FIBRILLATION
I4892	UNSPECIFIED ATRIAL FLUTTER
I4901	VENTRICULAR FIBRILLATION
I4902	VENTRICULAR FLUTTER
I491	ATRIAL PREMATURE DEPOLARIZATION
I492	JUNCTIONAL PREMATURE DEPOLARIZATION
I493	VENTRICULAR PREMATURE DEPOLARIZATION
I4940	UNSPECIFIED PREMATURE DEPOLARIZATION
I4949	OTHER PREMATURE DEPOLARIZATION
I495	SICK SINUS SYNDROME
I498	OTHER SPECIFIED CARDIAC ARRHYTHMIAS
I499	CARDIAC ARRHYTHMIA, UNSPECIFIED
I501	LEFT VENTRICULAR FAILURE
I5020	UNSPECIFIED SYSTOLIC (CONGESTIVE) HEART FAILURE

15021	ACUTE SYSTOLIC (CONGESTIVE) HEART FAILURE
15022	CHRONIC SYSTOLIC (CONGESTIVE) HEART FAILURE
15023	ACUTE ON CHRONIC SYSTOLIC (CONGESTIVE) HEART FAILURE
15030	UNSPECIFIED DIASTOLIC (CONGESTIVE) HEART FAILURE
15031	ACUTE DIASTOLIC (CONGESTIVE) HEART FAILURE

Step 5 (diagnosis of cardiac condition defect, hyperthyroidism, or heart failure)	
Required diagnosis: 1	
Look back timeframe: 365 days	
15032	CHRONIC DIASTOLIC (CONGESTIVE) HEART FAILURE
15033	ACUTE ON CHRONIC DIASTOLIC (CONGESTIVE) HEART FAILURE
15040	UNSPECIFIED COMBINED SYSTOLIC (CONGESTIVE) AND DIASTOLIC (CONGESTIVE) HEART FAILURE
15041	ACUTE COMBINED SYSTOLIC (CONGESTIVE) AND DIASTOLIC (CONGESTIVE) HEART FAILURE
15042	CHRONIC COMBINED SYSTOLIC (CONGESTIVE) AND DIASTOLIC (CONGESTIVE) HEART FAILURE
15043	ACUTE ON CHRONIC COMBINED SYSTOLIC (CONGESTIVE) AND DIASTOLIC (CONGESTIVE) HEART FAILURE
1509	HEART FAILURE, UNSPECIFIED
197110	POSTPROCEDURAL CARDIAC INSUFFICIENCY FOLLOWING CARDIAC SURGERY
197111	POSTPROCEDURAL CARDIAC INSUFFICIENCY FOLLOWING OTHER SURGERY
197120	POSTPROCEDURAL CARDIAC ARREST FOLLOWING CARDIAC SURGERY
197121	POSTPROCEDURAL CARDIAC ARREST FOLLOWING OTHER SURGERY
197130	POSTPROCEDURAL HEART FAILURE FOLLOWING CARDIAC SURGERY
197131	POSTPROCEDURAL HEART FAILURE FOLLOWING OTHER SURGERY
197190	OTHER POSTPROCEDURAL CARDIAC FUNCTIONAL DISTURBANCES FOLLOWING CARDIAC SURGERY
197191	OTHER POSTPROCEDURAL CARDIAC FUNCTIONAL DISTURBANCES FOLLOWING OTHER SURGERY
197710	INTRAOPERATIVE CARDIAC ARREST DURING CARDIAC SURGERY
197711	INTRAOPERATIVE CARDIAC ARREST DURING OTHER SURGERY
197790	OTHER INTRAOPERATIVE CARDIAC FUNCTIONAL DISTURBANCES DURING CARDIAC SURGERY
197791	OTHER INTRAOPERATIVE CARDIAC FUNCTIONAL DISTURBANCES DURING OTHER SURGERY
19788	OTHER INTRAOPERATIVE COMPLICATIONS OF THE CIRCULATORY SYSTEM, NOT ELSEWHERE CLASSIFIED
19789	OTHER POSTPROCEDURAL COMPLICATIONS AND DISORDERS OF THE CIRCULATORY SYSTEM, NOT ELSEWHERE CLASSIFIED
R001	BRADYCARDIA, UNSPECIFIED

R9430	ABNORMAL RESULT OF CARDIOVASCULAR FUNCTION STUDY, UNSPECIFIED
R9431	ABNORMAL ELECTROCARDIOGRAM [ECG] [EKG]

Step 5 (diagnosis of cardiac condition defect, hyperthyroidism, or heart failure) Removed diagnosis codes	
7802	SYNCOPE AND COLLAPSE
R55	SYNCOPE AND COLLAPSE

Step 6 (history of monoamine oxidase inhibitor therapy) Required quantity: 1 Look back timeframe: 14 days	
Label Name	GCN
AZILECT 0.5MG TABLET	27081
AZILECT 1MG TABLET	24654
EMSAM 12MG/24 HOURS PATCH	26614
EMSAM 6MG/24 HOURS PATCH	26612
LINEZOLID 600MG TABLET	26870
LINEZOLID 600MG/300ML IV SOLN	26873
MARPLAN 10MG TABLET	16416
NARDIL 15MG TABLET	16417
PARNATE 10MG TABLET	16418
PHENELZINE SULFATE 15MG TABLET	16417
SELEGILINE HCL 5MG CAPSULE	15603
SELEGILINE HCL 5MG TABLET	15600
TRANLYCPROMINE 10MG TABLET	16418
ZELAPAR 1.25 MG ODT TABLET	22783
ZYVOX 100MG/5ML SUSPENSION	26871
ZYVOX 600MG TABLET	26870
ZYVOX 600MG/300ML IV SOLN	26873

Clinical Edit References:

1. Clinical Pharmacology [online database]. Tampa, FL: Elsevier/Gold Standard, Inc.; 2016. Available at www.clinicalpharmacology.com. Accessed on April 1, 2017.
2. Micromedex [online database]. Available at www.micromedexsolutions.com. Accessed on April 1, 2017.
3. 2015 ICD-9-CM Diagnosis Codes. 2015. Available at www.icd9data.com. Accessed on April 3, 2015.
4. 2015 ICD-10-CM Diagnosis Codes. 2015. Available at www.icd10data.com. Accessed on April 3, 2015.
5. Amrix Prescribing Information. North Wales, PA. Teva Pharmaceuticals. May a. 2016.
6. American Geriatrics Society 2015 Updated Beers Criteria for Potentially Inappropriate Medication Use in Older Adults. American Geriatrics Society 2015 Beers Criteria Update Expert Panel. Journal of the American Geriatrics Society 2015;63(11):2227-2246.

Publication History:

Publication Date	Notes
09/28/15	Clinical edit added.
07/01/07	Modified edit to shorten lookback period of hyperthyroidism, cardiac condition and heart failure from 730 to 365 days and to remove syncope diagnosis as a basis for denial. Reference tables, diagnosis codes, references and publication table per UMCM Chapter 3 requirements. All tables are cross referenced to VDP criteria.