

Anxiolytics and Sedatives/Hypnotics Clinical Edit Criteria



Drug/Drug Class:

Sedatives/Hypnotics – Adults

Superior HealthPlan follows the guidance of the Texas Vendor Drug Program (VDP) for all clinical edit criteria. This clinical edit criteria applies to all Superior HealthPlan STAR, STAR Health, STAR Kids, STAR+PLUS and CHIP members. Superior has adjusted the anxiolytic and sedative hypnotic clinical criteria to ease the prior authorization process regarding this clinical edit. Superior HealthPlan is only implementing and coding clinical criteria for non-benzodiazepines sedatives/hypnotics- adults and step 1 has been removed as a requirement from the criteria. The criteria for anxiolytics and all other parts of this edit will not be implemented at this time. Benzodiazepines are removed from the coding of the sedative/hypnotic- adults portion of the edit. Adjusted criteria steps are outlined/highlighted in yellow.

The original clinical edit can be referenced at
<https://paxpress.txpa.hidinc.com/ashpdg.pdf>.

Clinical Edit Information Included in this Document:

- Anxiolytics—Alprazolam
- Anxiolytics—Chlordiazepoxide, Meprobamate & Oxazepam
- Anxiolytics—Clonazepam & Diazepam
- Anxiolytics—Clorazepate
- Anxiolytics—Lorazepam
- Sedatives/Hypnotics—Chloral Hydrate & Butabarbital
- Sedatives/Hypnotics—Flurazepam
- Sedatives/Hypnotics—Ramelteon
- Sedatives/Hypnotics- Adults
- **Drugs requiring prior authorization:** the list of drugs requiring prior authorization for this clinical criteria.
- **Prior authorization criteria logic:** a description of how the prior authorization request will be evaluated against the clinical criteria rules.
- **Logic diagram:** a visual depiction of the clinical edit criteria logic.
- **Diagnosis codes or drugs in step logic:** a list of diagnosis codes or drug information and additional step logic, claims and lookback period information.
- **Supporting tables:** a collection of information associated with the steps within the criteria (diagnosis codes, procedure codes, and therapy codes); provided when applicable
- **Clinical Edit References:** clinical edit references as provided by the Texas Vendor Drug Program.
- **Publication history:** to track when the eased criteria was put into production and any updates since this time.

Please note: All tables are provided by original Anxiolytics and Sedatives/Hypnotics Texas Vendor Drug Program Edit.

Drugs Requiring Prior Authorization Sedatives/Hypnotics – Adults

The listed GCNs may not be an indication of TX Medicaid Formulary coverage. To learn the current formulary coverage, visit TxVendorDrug.com/formulary/formulary-search.

Drugs Requiring Prior Authorization	
Label Name	GCN
AMBIEN 5 MG TABLET	00870
AMBIEN 10 MG TABLET	00871
AMBIEN CR 6.25 MG TABLET	25456
AMBIEN CR 12.5 MG TABLET	25457
BELSOMRA 10 MG TABLET	36968
BELSOMRA 15 MG TABLET	36969
BELSOMRA 20 MG TABLET	36971
BELSOMRA 5 MG TABLET	36967
EDLUAR 5 MG SL TABLET	26183
EDLUAR 10 MG SL TABLET	26182
ESTAZOLAM 1 MG TABLET	19184
ESTAZOLAM 2 MG TABLET	19182
ESZOPICLONE 1 MG TABLET	23927
ESZOPICLONE 2 MG TABLET	23926
ESZOPICLONE 3 MG TABLET	23925
INTERMEZZO 1.75 MG TAB SUBLING	31562
INTERMEZZO 3.5 MG TAB SUBLING	31563
LUNESTA 1 MG TABLET	23927
LUNESTA 2 MG TABLET	23926
LUNESTA 3 MG TABLET	23925
RESTORIL 7.5 MG CAPSULE	13845
RESTORIL 15 MG CAPSULE	13840
RESTORIL 22.5 MG CAPSULE	24036
RESTORIL 30 MG CAPSULE	13844
SONATA 5 MG CAPSULE	92713
SONATA 10 MG CAPSULE	92723
TEMAZEPAM 7.5 MG CAPSULE	13845
TEMAZEPAM 15 MG CAPSULE	13840
TEMAZEPAM 22.5 MG CAPSULE	24036
TEMAZEPAM 30 MG CAPSULE	13844
TRIAZOLAM 0.125 MG TABLET	14282
TRIAZOLAM 0.25 MG TABLET	14280
ZALEPLON 5 MG CAPSULE	92713
ZALEPLON 10 MG CAPSULE	92723
ZOLPIDEM TART 1.75 MG TABLET SL	31562
ZOLPIDEM TART 3.5 MG TABLET SL	31563
ZOLPIDEM TART ER 6.25 MG TAB	25456
ZOLPIDEM TART ER 12.5 MG TAB	25457
ZOLPIDEM TARTRATE 5 MG TABLET	00870
ZOLPIDEM TARTRATE 10 MG TABLET	00871

Superior HealthPlan Clinical Criteria Logic Sedatives/Hypnotics - Adults

1. Does the client have a history of a sedative/hypnotic agent for 90 days in the last 150 days?

☐ Yes (Approve – 365 days)

☐ No (Go to #2)

2. Is the incoming request for less than or equal to (\leq) 1 days supply?

☐ Yes (Go to #3)

☐ No (Go to #4)

3. Is the incoming request for less than or equal to (\leq) 5 units per day?

☐ Yes (Approve – 1 day)

☐ No (Go to #4)

4. Does the client have a diagnosis of chronic sleep disorder in the last 730 days?

☐ Yes (Go to #6)

☐ No (Go to #5)

5. Does the client have a diagnosis of drug abuse in the last 730 days?

☐ Yes (Deny)

☐ No (Go to #6)

6. Is the client less than ($<$) 19 years of age?

☐ Yes (Deny)

☐ No (Go to #7)

7. Does the client have a diagnosis of insomnia in the last 365 days?

☐ Yes (Go to #8)

☐ No (Go to #9)

8. Does the client have a history of a sedative/hypnotic agent for 90 days in the last 120 days?

☐ Yes (Deny)

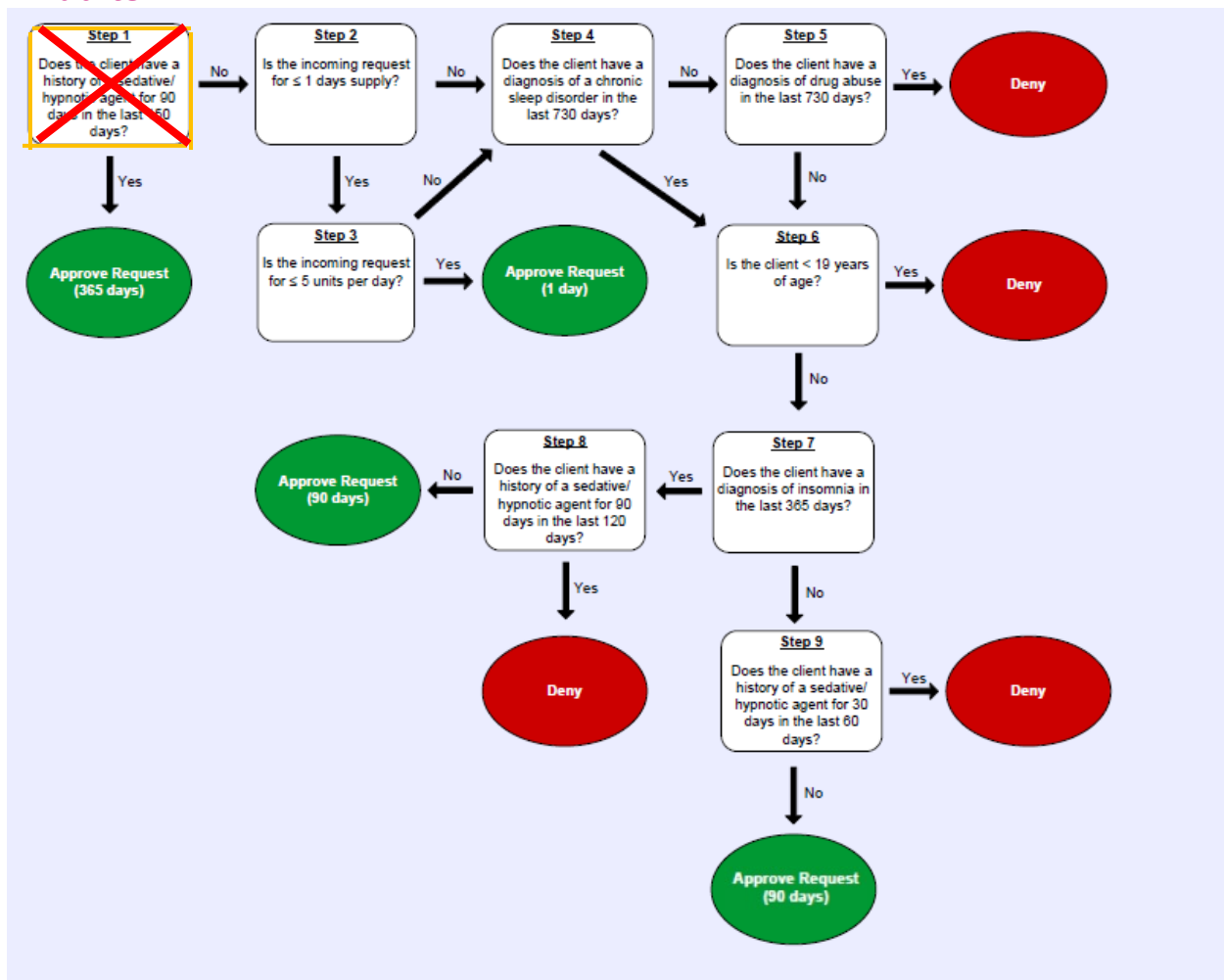
☐ No (Approve – 90 days)

9. Does the client have a history of a sedative/hypnotic agent for 30 days in the last 60 days?

☐ Yes (Deny)

☐ No (Approve – 90 days)

Superior HealthPlan Clinical Edit Logic Diagram Sedatives/Hypnotics - Adults



Clinical Criteria Supporting Tables

Chronic Sleep Disorder Diagnoses	
Required diagnosis: 1	
Look back timeframe: 365 or 730 days	
ICD-10 Code	Description
F519	SLEEP DISORDER NOT DUE TO A SUBSTANCE OR KNOWN PHYSIOLOGICAL CONDITION, UNSPECIFIED
F5101	PRIMARY INSOMNIA
F5103	PARADOXICAL INSOMNIA
F5109	OTHER INSOMNIA NOT DUE TO A SUBSTANCE OR KNOWN PHYSIOLOGICAL CONDITION
G4701	INSOMNIA DUE TO MEDICAL CONDITION
F5105	INSOMNIA DUE TO OTHER MENTAL DISORDER
F5104	PSYCHOPHYSIOLOGIC INSOMNIA
G4709	OTHER INSOMNIA
G479	SLEEP DISORDER, UNSPECIFIED
G4700	INSOMNIA, UNSPECIFIED

Drug Abuse Diagnoses	
Required diagnosis: 1	
Look back timeframe: 730 days	
ICD-10 Code	Description
F1129	OPIOID DEPENDENCE WITH UNSPECIFIED OPIOID-INDUCED DISORDER
F1124	OPIOID DEPENDENCE WITH OPIOID-INDUCED MOOD DISORDER

Drug Abuse Diagnoses	
Required diagnosis: 1	
Look back timeframe: 730 days	
ICD-10 Code	Description
F11282	OPIOID DEPENDENCE WITH OPIOID-INDUCED SLEEP DISORDER
F11288	OPIOID DEPENDENCE WITH OTHER OPIOID-INDUCED DISORDER
F11229	OPIOID DEPENDENCE WITH INTOXICATION, UNSPECIFIED
F11259	OPIOID DEPENDENCE WITH OPIOID-INDUCED PSYCHOTIC DISORDER, UNSPECIFIED
F11281	OPIOID DEPENDENCE WITH OPIOID-INDUCED SEXUAL DYSFUNCTION
F11221	OPIOID DEPENDENCE WITH INTOXICATION DELIRIUM
F11250	OPIOID DEPENDENCE WITH OPIOID-INDUCED PSYCHOTIC DISORDER WITH DELUSIONS
F11251	OPIOID DEPENDENCE WITH OPIOID-INDUCED PSYCHOTIC DISORDER WITH HALLUCINATIONS
F1123	OPIOID DEPENDENCE WITH WITHDRAWAL
F11222	OPIOID DEPENDENCE WITH INTOXICATION WITH PERCEPTUAL DISTURBANCE
F11220	OPIOID DEPENDENCE WITH INTOXICATION, UNCOMPLICATED
F1120	OPIOID DEPENDENCE, UNCOMPLICATED
F1121	OPIOID DEPENDENCE, IN REMISSION
F13288	SEDATIVE, HYPNOTIC OR ANXIOLYTIC DEPENDENCE WITH OTHER SEDATIVE, HYPNOTIC OR ANXIOLYTIC-INDUCED DISORDER
F13280	SEDATIVE, HYPNOTIC OR ANXIOLYTIC DEPENDENCE WITH SEDATIVE, HYPNOTIC OR ANXIOLYTIC-INDUCED ANXIETY DISORDER
F13281	SEDATIVE, HYPNOTIC OR ANXIOLYTIC DEPENDENCE WITH SEDATIVE, HYPNOTIC OR ANXIOLYTIC-INDUCED SEXUAL DYSFUNCTION
F13282	SEDATIVE, HYPNOTIC OR ANXIOLYTIC DEPENDENCE WITH SEDATIVE, HYPNOTIC OR ANXIOLYTIC-INDUCED SLEEP DISORDER
F13259	SEDATIVE, HYPNOTIC OR ANXIOLYTIC DEPENDENCE WITH SEDATIVE, HYPNOTIC OR ANXIOLYTIC-INDUCED PSYCHOTIC DISORDER, UNSPECIFIED
F1326	SEDATIVE, HYPNOTIC OR ANXIOLYTIC DEPENDENCE WITH SEDATIVE, HYPNOTIC OR ANXIOLYTIC-INDUCED PERSISTING AMNESTIC DISORDER
F1329	SEDATIVE, HYPNOTIC OR ANXIOLYTIC DEPENDENCE WITH UNSPECIFIED SEDATIVE, HYPNOTIC OR ANXIOLYTIC-INDUCED DISORDER
F13250	SEDATIVE, HYPNOTIC OR ANXIOLYTIC DEPENDENCE WITH SEDATIVE, HYPNOTIC OR ANXIOLYTIC-INDUCED PSYCHOTIC DISORDER WITH DELUSIONS

Drug Abuse Diagnoses	
Required diagnosis: 1	
Look back timeframe: 730 days	
ICD-10 Code	Description
F13251	SEDATIVE, HYPNOTIC OR ANXIOLYTIC DEPENDENCE WITH SEDATIVE, HYPNOTIC OR ANXIOLYTIC-INDUCED PSYCHOTIC DISORDER WITH HALLUCINATIONS
F13232	SEDATIVE, HYPNOTIC OR ANXIOLYTIC DEPENDENCE WITH WITHDRAWAL WITH PERCEPTUAL DISTURBANCE
F13239	SEDATIVE, HYPNOTIC OR ANXIOLYTIC DEPENDENCE WITH WITHDRAWAL, UNSPECIFIED
F1327	SEDATIVE, HYPNOTIC OR ANXIOLYTIC DEPENDENCE WITH SEDATIVE, HYPNOTIC OR ANXIOLYTIC-INDUCED PERSISTING DEMENTIA
F13230	SEDATIVE, HYPNOTIC OR ANXIOLYTIC DEPENDENCE WITH WITHDRAWAL, UNCOMPLICATED
F13231	SEDATIVE, HYPNOTIC OR ANXIOLYTIC DEPENDENCE WITH WITHDRAWAL DELIRIUM
F13220	SEDATIVE, HYPNOTIC OR ANXIOLYTIC DEPENDENCE WITH INTOXICATION, UNCOMPLICATED
F13221	SEDATIVE, HYPNOTIC OR ANXIOLYTIC DEPENDENCE WITH INTOXICATION DELIRIUM
F1324	SEDATIVE, HYPNOTIC OR ANXIOLYTIC DEPENDENCE WITH SEDATIVE, HYPNOTIC OR ANXIOLYTIC-INDUCED MOOD DISORDER
F13229	SEDATIVE, HYPNOTIC OR ANXIOLYTIC DEPENDENCE WITH INTOXICATION, UNSPECIFIED
F1320	SEDATIVE, HYPNOTIC OR ANXIOLYTIC DEPENDENCE, UNCOMPLICATED
F1321	SEDATIVE, HYPNOTIC OR ANXIOLYTIC DEPENDENCE, IN REMISSION
F14251	COCAINE DEPENDENCE WITH COCAINE-INDUCED PSYCHOTIC DISORDER WITH HALLUCINATIONS
F14288	COCAINE DEPENDENCE WITH OTHER COCAINE-INDUCED DISORDER
F1429	COCAINE DEPENDENCE WITH UNSPECIFIED COCAINE-INDUCED DISORDER
F14281	COCAINE DEPENDENCE WITH COCAINE-INDUCED SEXUAL DYSFUNCTION
F14282	COCAINE DEPENDENCE WITH COCAINE-INDUCED SLEEP DISORDER
F14222	COCAINE DEPENDENCE WITH INTOXICATION WITH PERCEPTUAL DISTURBANCE
F14259	COCAINE DEPENDENCE WITH COCAINE-INDUCED PSYCHOTIC DISORDER, UNSPECIFIED
F14280	COCAINE DEPENDENCE WITH COCAINE-INDUCED ANXIETY DISORDER
F1424	COCAINE DEPENDENCE WITH COCAINE-INDUCED MOOD DISORDER
F14250	COCAINE DEPENDENCE WITH COCAINE-INDUCED PSYCHOTIC DISORDER WITH DELUSIONS
F14229	COCAINE DEPENDENCE WITH INTOXICATION, UNSPECIFIED
F1423	COCAINE DEPENDENCE WITH WITHDRAWAL
F14220	COCAINE DEPENDENCE WITH INTOXICATION, UNCOMPLICATED
F14221	COCAINE DEPENDENCE WITH INTOXICATION DELIRIUM
F1420	COCAINE DEPENDENCE, UNCOMPLICATED
F1421	COCAINE DEPENDENCE, IN REMISSION

Drug Abuse Diagnoses	
Required diagnosis: 1	
Look back timeframe: 730 days	
ICD-10 Code	Description
F12251	CANNABIS DEPENDENCE WITH PSYCHOTIC DISORDER WITH HALLUCINATIONS
F12288	CANNABIS DEPENDENCE WITH OTHER CANNABIS-INDUCED DISORDER
F1229	CANNABIS DEPENDENCE WITH UNSPECIFIED CANNABIS-INDUCED DISORDER
F12220	CANNABIS DEPENDENCE WITH INTOXICATION, UNCOMPLICATED
F12259	CANNABIS DEPENDENCE WITH PSYCHOTIC DISORDER, UNSPECIFIED
F12280	CANNABIS DEPENDENCE WITH CANNABIS-INDUCED ANXIETY DISORDER
F12222	CANNABIS DEPENDENCE WITH INTOXICATION WITH PERCEPTUAL DISTURBANCE
F12229	CANNABIS DEPENDENCE WITH INTOXICATION, UNSPECIFIED
F12250	CANNABIS DEPENDENCE WITH PSYCHOTIC DISORDER WITH DELUSIONS
F1220	CANNABIS DEPENDENCE, UNCOMPLICATED
F12221	CANNABIS DEPENDENCE WITH INTOXICATION DELIRIUM
F1221	CANNABIS DEPENDENCE, IN REMISSION
F15220	OTHER STIMULANT DEPENDENCE WITH INTOXICATION, UNCOMPLICATED
F1520	OTHER STIMULANT DEPENDENCE, UNCOMPLICATED
F15222	OTHER STIMULANT DEPENDENCE WITH INTOXICATION WITH PERCEPTUAL DISTURBANCE
F1524	OTHER STIMULANT DEPENDENCE WITH STIMULANT-INDUCED MOOD DISORDER
F15221	OTHER STIMULANT DEPENDENCE WITH INTOXICATION DELIRIUM
F15251	OTHER STIMULANT DEPENDENCE WITH STIMULANT-INDUCED PSYCHOTIC DISORDER WITH HALLUCINATIONS
F15229	OTHER STIMULANT DEPENDENCE WITH INTOXICATION, UNSPECIFIED
F1523	OTHER STIMULANT DEPENDENCE WITH WITHDRAWAL
F15281	OTHER STIMULANT DEPENDENCE WITH STIMULANT-INDUCED SEXUAL DYSFUNCTION
F15250	OTHER STIMULANT DEPENDENCE WITH STIMULANT-INDUCED PSYCHOTIC DISORDER WITH DELUSIONS
F15259	OTHER STIMULANT DEPENDENCE WITH STIMULANT-INDUCED PSYCHOTIC DISORDER, UNSPECIFIED
F15280	OTHER STIMULANT DEPENDENCE WITH STIMULANT-INDUCED ANXIETY DISORDER
F1529	OTHER STIMULANT DEPENDENCE WITH UNSPECIFIED STIMULANT-INDUCED DISORDER

Drug Abuse Diagnoses	
Required diagnosis: 1	
Look back timeframe: 730 days	
ICD-10 Code	Description
F15282	OTHER STIMULANT DEPENDENCE WITH STIMULANT-INDUCED SLEEP DISORDER
F15288	OTHER STIMULANT DEPENDENCE WITH OTHER STIMULANT-INDUCED DISORDER
F1521	OTHER STIMULANT DEPENDENCE, IN REMISSION
F1629	HALLUCINOGEN DEPENDENCE WITH UNSPECIFIED HALLUCINOGEN-INDUCED DISORDER
F16280	HALLUCINOGEN DEPENDENCE WITH HALLUCINOGEN-INDUCED ANXIETY DISORDER
F16283	HALLUCINOGEN DEPENDENCE WITH HALLUCINOGEN PERSISTING PERCEPTION DISORDER (FLASHBACKS)
F16288	HALLUCINOGEN DEPENDENCE WITH OTHER HALLUCINOGEN-INDUCED DISORDER
F16251	HALLUCINOGEN DEPENDENCE WITH HALLUCINOGEN-INDUCED PSYCHOTIC DISORDER WITH HALLUCINATIONS
F16259	HALLUCINOGEN DEPENDENCE WITH HALLUCINOGEN-INDUCED PSYCHOTIC DISORDER, UNSPECIFIED
F16229	HALLUCINOGEN DEPENDENCE WITH INTOXICATION, UNSPECIFIED
F1624	HALLUCINOGEN DEPENDENCE WITH HALLUCINOGEN-INDUCED MOOD DISORDER
F16250	HALLUCINOGEN DEPENDENCE WITH HALLUCINOGEN-INDUCED PSYCHOTIC DISORDER WITH DELUSIONS
F16220	HALLUCINOGEN DEPENDENCE WITH INTOXICATION, UNCOMPLICATED
F16221	HALLUCINOGEN DEPENDENCE WITH INTOXICATION WITH DELIRIUM
F1620	HALLUCINOGEN DEPENDENCE, UNCOMPLICATED
F1621	HALLUCINOGEN DEPENDENCE, IN REMISSION
F1929	OTHER PSYCHOACTIVE SUBSTANCE DEPENDENCE WITH UNSPECIFIED PSYCHOACTIVE SUBSTANCE-INDUCED DISORDER
F19281	OTHER PSYCHOACTIVE SUBSTANCE DEPENDENCE WITH PSYCHOACTIVE SUBSTANCE-INDUCED SEXUAL DYSFUNCTION
F19251	OTHER PSYCHOACTIVE SUBSTANCE DEPENDENCE WITH PSYCHOACTIVE SUBSTANCE-INDUCED PSYCHOTIC DISORDER WITH HALLUCINATIONS
F19282	OTHER PSYCHOACTIVE SUBSTANCE DEPENDENCE WITH PSYCHOACTIVE SUBSTANCE-INDUCED SLEEP DISORDER
F19288	OTHER PSYCHOACTIVE SUBSTANCE DEPENDENCE WITH OTHER PSYCHOACTIVE SUBSTANCE-INDUCED DISORDER
F1927	OTHER PSYCHOACTIVE SUBSTANCE DEPENDENCE WITH PSYCHOACTIVE SUBSTANCE-INDUCED PERSISTING DEMENTIA
F19280	OTHER PSYCHOACTIVE SUBSTANCE DEPENDENCE WITH PSYCHOACTIVE SUBSTANCE-INDUCED ANXIETY DISORDER

Drug Abuse Diagnoses	
Required diagnosis: 1	
Look back timeframe: 730 days	
ICD-10 Code	Description
F19231	OTHER PSYCHOACTIVE SUBSTANCE DEPENDENCE WITH WITHDRAWAL DELIRIUM
F19259	OTHER PSYCHOACTIVE SUBSTANCE DEPENDENCE WITH PSYCHOACTIVE SUBSTANCE-INDUCED PSYCHOTIC DISORDER, UNSPECIFIED
F1926	OTHER PSYCHOACTIVE SUBSTANCE DEPENDENCE WITH PSYCHOACTIVE SUBSTANCE-INDUCED PERSISTING AMNESTIC DISORDER
F1924	OTHER PSYCHOACTIVE SUBSTANCE DEPENDENCE WITH PSYCHOACTIVE SUBSTANCE-INDUCED MOOD DISORDER
F19250	OTHER PSYCHOACTIVE SUBSTANCE DEPENDENCE WITH PSYCHOACTIVE SUBSTANCE-INDUCED PSYCHOTIC DISORDER WITH DELUSIONS
F19220	OTHER PSYCHOACTIVE SUBSTANCE DEPENDENCE WITH INTOXICATION, UNCOMPLICATED
F19232	OTHER PSYCHOACTIVE SUBSTANCE DEPENDENCE WITH WITHDRAWAL WITH PERCEPTUAL DISTURBANCE
F19239	OTHER PSYCHOACTIVE SUBSTANCE DEPENDENCE WITH WITHDRAWAL, UNSPECIFIED
F19222	OTHER PSYCHOACTIVE SUBSTANCE DEPENDENCE WITH INTOXICATION WITH PERCEPTUAL DISTURBANCE
F19229	OTHER PSYCHOACTIVE SUBSTANCE DEPENDENCE WITH INTOXICATION, UNSPECIFIED
F19230	OTHER PSYCHOACTIVE SUBSTANCE DEPENDENCE WITH WITHDRAWAL, UNCOMPLICATED
F1920	OTHER PSYCHOACTIVE SUBSTANCE DEPENDENCE, UNCOMPLICATED
F19221	OTHER PSYCHOACTIVE SUBSTANCE DEPENDENCE WITH INTOXICATION DELIRIUM
F18288	INHALANT DEPENDENCE WITH OTHER INHALANT-INDUCED DISORDER
F18280	INHALANT DEPENDENCE WITH INHALANT-INDUCED ANXIETY DISORDER
F18250	INHALANT DEPENDENCE WITH INHALANT-INDUCED PSYCHOTIC DISORDER WITH DELUSIONS
F1829	INHALANT DEPENDENCE WITH UNSPECIFIED INHALANT-INDUCED DISORDER
F18259	INHALANT DEPENDENCE WITH INHALANT-INDUCED PSYCHOTIC DISORDER, UNSPECIFIED
F1827	INHALANT DEPENDENCE WITH INHALANT-INDUCED DEMENTIA
F1824	INHALANT DEPENDENCE WITH INHALANT-INDUCED MOOD DISORDER
F18251	INHALANT DEPENDENCE WITH INHALANT-INDUCED PSYCHOTIC DISORDER WITH HALLUCINATIONS
F18221	INHALANT DEPENDENCE WITH INTOXICATION DELIRIUM

Drug Abuse Diagnoses	
Required diagnosis: 1	
Look back timeframe: 730 days	
ICD-10 Code	Description
F18220	INHALANT DEPENDENCE WITH INTOXICATION, UNCOMPLICATED
F18229	INHALANT DEPENDENCE WITH INTOXICATION, UNSPECIFIED
F1820	INHALANT DEPENDENCE, UNCOMPLICATED
F1921	OTHER PSYCHOACTIVE SUBSTANCE DEPENDENCE, IN REMISSION
F1821	INHALANT DEPENDENCE, IN REMISSION
F1010	ALCOHOL ABUSE, UNCOMPLICATED
F10129	ALCOHOL ABUSE WITH INTOXICATION, UNSPECIFIED
F10120	ALCOHOL ABUSE WITH INTOXICATION, UNCOMPLICATED
F1290	CANNABIS USE, UNSPECIFIED, UNCOMPLICATED
F1210	CANNABIS ABUSE, UNCOMPLICATED
F1610	HALLUCINOGEN ABUSE, UNCOMPLICATED
F1690	HALLUCINOGEN USE, UNSPECIFIED, UNCOMPLICATED
F16120	HALLUCINOGEN ABUSE WITH INTOXICATION, UNCOMPLICATED
F1310	SEDATIVE, HYPNOTIC OR ANXIOLYTIC ABUSE, UNCOMPLICATED
F1390	SEDATIVE, HYPNOTIC, OR ANXIOLYTIC USE, UNSPECIFIED, UNCOMPLICATED
F13120	SEDATIVE, HYPNOTIC OR ANXIOLYTIC ABUSE WITH INTOXICATION, UNCOMPLICATED
F11120	OPIOID ABUSE WITH INTOXICATION, UNCOMPLICATED
F1110	OPIOID ABUSE, UNCOMPLICATED
F1190	OPIOID USE, UNSPECIFIED, UNCOMPLICATED
F11129	OPIOID ABUSE WITH INTOXICATION, UNSPECIFIED
F14120	COCAINE ABUSE WITH INTOXICATION, UNCOMPLICATED
F1490	COCAINE USE, UNSPECIFIED, UNCOMPLICATED
F1410	COCAINE ABUSE, UNCOMPLICATED
F1590	OTHER STIMULANT USE, UNSPECIFIED, UNCOMPLICATED
F1510	OTHER STIMULANT ABUSE, UNCOMPLICATED
F15120	OTHER STIMULANT ABUSE WITH INTOXICATION, UNCOMPLICATED
F18120	INHALANT ABUSE WITH INTOXICATION, UNCOMPLICATED
F1810	INHALANT ABUSE, UNCOMPLICATED
F1890	INHALANT USE, UNSPECIFIED, UNCOMPLICATED

Insomnia Diagnoses	
Required diagnosis: 1	
Look back timeframe: 180 or 365 days	
ICD-10 Code	Description
F5101	PRIMARY INSOMNIA
F5103	PARADOXICAL INSOMNIA
F5109	OTHER INSOMNIA NOT DUE TO A SUBSTANCE OR KNOWN PHYSIOLOGICAL CONDITION
F5101	PRIMARY INSOMNIA
G4701	INSOMNIA DUE TO MEDICAL CONDITION
F5105	INSOMNIA DUE TO OTHER MENTAL DISORDER
F5104	PSYCHOPHYSIOLOGIC INSOMNIA

Sedative/Hypnotic Agents	
History of prior therapy in the past 30 or 90 days	
Required quantity: 1	
Look back timeframe: 60 or 120 days	
Label Name	GCN
AMBIEN 5 MG TABLET	00870
AMBIEN 10 MG TABLET	00871
AMBIEN CR 6.25 MG TABLET	25456
AMBIEN CR 12.5 MG TABLET	25457
BELSOMRA 10 MG TABLET	36968
BELSOMRA 15 MG TABLET	36969
BELSOMRA 20 MG TABLET	36971
BELSOMRA 5 MG TABLET	36967
EDLUAR 5 MG SL TABLET	26183
EDLUAR 10 MG SL TABLET	26182
ESTAZOLAM 1 MG TABLET	19181
ESTAZOLAM 2 MG TABLET	19182
ESZOPICLONE 1 MG TABLET	23927
ESZOPICLONE 2 MG TABLET	23926
ESZOPICLONE 3 MG TABLET	23925
INTERMEZZO 1.75 MG TAB SUBLING	31562
INTERMEZZO 3.5 MG TAB SUBLING	31563

Sedative/Hypnotic Agents	
History of prior therapy in the past 30 or 90 days	
Required quantity: 1	
Look back timeframe: 60 or 120 days	
Label Name	GCN
LUNESTA 1 MG TABLET	23927
LUNESTA 2 MG TABLET	23926
LUNESTA 3 MG TABLET	23925
RESTORIL 7.5 MG CAPSULE	13845
RESTORIL 15 MG CAPSULE	13840
RESTORIL 22.5 MG CAPSULE	24036
RESTORIL 30 MG CAPSULE	13841
SONATA 5 MG CAPSULE	92713
SONATA 10 MG CAPSULE	92723
TEMAZEPAM 7.5 MG CAPSULE	13845
TEMAZEPAM 15 MG CAPSULE	13840
TEMAZEPAM 22.5 MG CAPSULE	24036
TEMAZEPAM 30 MG CAPSULE	13841
TRIAZOLAM 0.125 MG TABLET	14282
TRIAZOLAM 0.25 MG TABLET	14280
ZALEPLON 5 MG CAPSULE	92713
ZALEPLON 10 MG CAPSULE	92723
ZOLPIDEM TART 1.75 MG TABLET SL	31562
ZOLPIDEM TART 3.5 MG TABLET SL	31563
ZOLPIDEM TART ER 6.25 MG TAB	25456
ZOLPIDEM TART ER 12.5 MG TAB	25457
ZOLPIDEM TARTRATE 5 MG TABLET	00870
ZOLPIDEM TARTRATE 10 MG TABLET	00871

Clinical Criteria References

1. Silber MH. Chronic insomnia. *N Eng J Med* 2005; 353:803–10.
2. Witek MW, Rojas V, Alonso C, et al. Review of benzodiazepine use in children and adolescents. *Psychiatr Quart* 2005; 76:283–96.
3. Davidson JRT. Pharmacotherapy of generalized anxiety disorder. *J Clin Psychiatry* 2001; 62(suppl 11): 46–50.
4. Varley CK, Smith CJ. Anxiety disorders in the child and teen. *Pediatr Clin N Am* 2003; 50: 1107–38.
5. Pelayo R, Chen W, Monzon S, et al. Pediatric sleep pharmacology: You want to give my kid sleeping pills? *Pediatr Clin N Am* 2004; 51:117–34.
6. Eddy M, Walbroehl GS. Insomnia. *Am Fam Phys* 1999;59(7): 1911–6.
7. Infante M, Benca R. Treatment of insomnia. *Prim Psychiatry* 2006; 12:47–56.
8. Zohar J. World Council on Anxiety recommendations for the long-term treatment of anxiety. *CNS Spectr* 2003; 8:5–6.
9. Longo LP, Johnson B. Addiction: Part 1: Benzodiazepines- side effects, abuse risk and alternatives. *Am Fam Physician* 2000 Apr 1; 61(7):2121–8.
10. American Academy of Child and Adolescent Psychiatry. Practice parameters for the assessment and treatment of children and adolescents with anxiety disorders. *J Am Acad Child Adolesc Psychiatry* 1997; 36(Suppl 10):1–30.
11. Demartinis N, Rynn M, Rickels K, Mandos L. Prior benzodiazepine use and buspirone response in the treatment of generalized anxiety disorder. *J Clin Psychiatry* 2000; 61(2):91–4.
12. Owens JA, Babcock D, Blumer J, et al. The use of pharmacotherapy in the treatment of pediatric insomnia in primary care: Rational approaches. A consensus meeting summary. *J Clin Sleep Med* 2005; 1:49–59.
13. Mindell JA, Emslie G, Blumer J, et al. Pharmacologic management of insomnia in children and adolescents: Consensus Statement. *Pediatrics* 2006; 117:1223–32.
14. Owens J. Insomnia in children and adolescents. *J Clin Sleep Med* 2005; 1:454–8.
15. Clinical Pharmacology [online database]. Tampa, FL: Elsevier/Gold Standard, Inc.; 2018. Available at www.clinicalpharmacology.com. Accessed on February 23, 2018.
16. Micromedex [online database]. Available at www.micromedexsolutions.com. Accessed on February 23, 2018.
17. 2014 ICD-9-CM Diagnosis Codes, Volume 1. 2014. Available at <http://www.icd9data.com/>. Accessed on January 2, 2015.
18. 2014 ICD-10-CM Diagnosis Codes, Volume 1. 2014. Available at <http://www.icd10data.com/>. Accessed on January 2, 2015.

19. American Psychiatric Association (APA). Practice guideline for the treatment of patients with panic disorder. 2nd ed. Washington DC: American Psychiatric Association (APS); 2009 Jan. 90 p. Available at www.psychiatryonline.org. Accessed January 2, 2015.
20. Connolly SD, Bernstein GA, et al. Practice Parameter for the Assessment and Treatment of Children and Adolescents With Anxiety Disorders. J Am Acad Child Adolesc Psychiatry 2007;46(2):267-283. Available at www.aacap.org. Accessed January 2, 2015.
21. Bandelow B, Sher L, Bunevicius R, et al. Guidelines for the pharmacological treatment of anxiety disorders, obsessive-compulsive disorder and posttraumatic stress disorder in primary care. Int J Psych Clin Pract 2012;16:77-84.
22. American Geriatrics Society 2015 Beers Criteria Update Expert Panel. American Geriatrics Society 2015 updated Beers Criteria for potentially inappropriate medication use in older adults. J Am Geriatr Soc. 2015 Nov;63(11):2227-46.
23. American Psychiatric Association (2013). Diagnostic and statistical manual of mental disorders (5th ed). Arlington, VA: American Psychiatric Publishing.
24. American Society of Addiction Medicine (ASAM). Public Policy Statement on Measures to Counteract Prescription Drug Diversion, Misuse and Addiction. Adopted January 2012. Available at www.asam.org. Accessed January 2, 2015.

Publication History:

Publication	Notes
05/29/2019	Criteria created and cross referenced to VDP criteria.
04/13/2020	Update URL link to VDP criteria Spelling correction to the word "adult" in Drug/Drug Class description field Updated to include formulary statement (The listed GCNS may not be an indication of TX Medicaid Formulary coverage. To learn the current formulary coverage, visit TxVendorDrug.com/formulary/formulary-search .) on each 'Drug Requiring PA' table